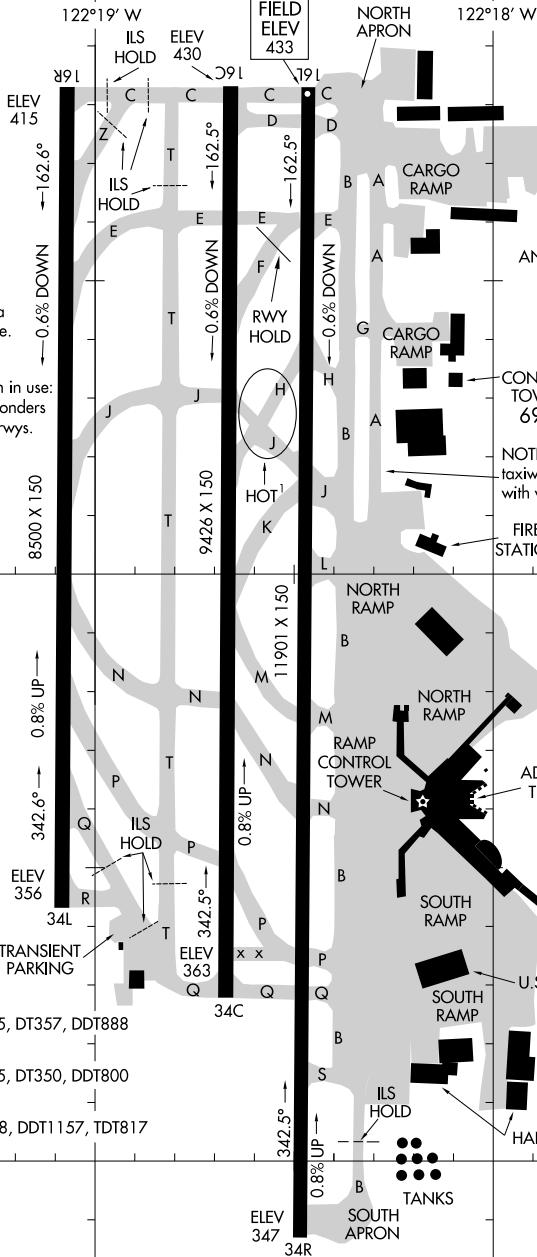


# AIRPORT DIAGRAM

AL-582 (FAA)

SEATTLE-TACOMA INTL (SEA)  
SEATTLE, WASHINGTON

ATIS  
118.0  
SEATTLE TOWER  
119.9 239.3  
(Rwys 16L/34R,  
16C/34C) (EAST)  
120.95 239.3  
(Rwy 16R/34L) (WEST)  
GND CON  
121.7



CAUTION: Pilots are cautioned not to mistake taxiway T for a landing surface.

ASDE-X Surveillance System in use: Pilots should operate transponders with Mode C on all twys & rwys.

JANUARY 2005  
ANNUAL RATE OF CHANGE  
0.2°W

NOTE: Taxiway A (south of taxiway G) restricted to aircraft with wingspan 214' and smaller.

NW-1, 07 MAY 2009 to 04 JUN 2009

NW-1, 07 MAY 2009 to 04 JUN 2009

RWY 16L-34R  
S100, D200, ST175, DT357, DDT888

RWY 16C-34C  
S100, D200, ST175, DT350, DDT800

RWY 16R-34L  
S100, D216, DT448, DDT1157, TDT817

CAUTION: BE ALERT TO RUNWAY CROSSING CLEARANCES.  
READBACK OF ALL RUNWAY HOLDING INSTRUCTIONS IS REQUIRED.

# AIRPORT DIAGRAM

SEATTLE, WASHINGTON  
SEATTLE-TACOMA INTL (SEA)